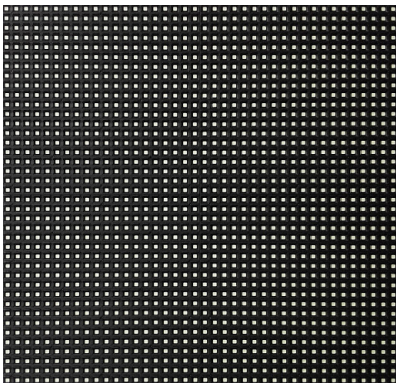


Outdoor Fixed LED Display



Panel Front View



Panel Rear View

SkyVue Outdoor Fixed LED Display Features

Superior Images

Uniform colour and high contrast ratio creating sharp, crisp images.

Efficient Design

Low power consumption and efficient heat release.

Made for Harsh Climates

UV resistant patented mask. IP65 grade with mask and Louvre design for a waterproof and dustproof enclosure.

Wide Viewing Angle

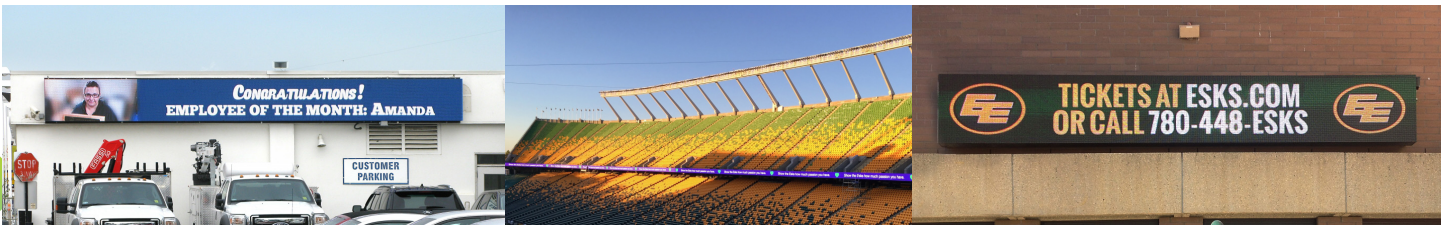
Super wide 160 degree viewing angle.

Perfect Image

No flicker, no brightline or darkline ensures a perfect image.

Auto Calibration

Each module automatically calibrates to precisely match neighboring modules.



Free Product Consultation | Free Technical Support

Suite #206 16028 100A Ave. NW
Edmonton, AB

vuetronic.com

info@vuetronic.com

Outdoor Fixed LED Specifications

Pixel Pitch	5 mm	6 mm	6.6 mm	8 mm	10 mm
Pixel configuration	SMD 3-in-1 LED				
Pixel density (pixels/m ²)	40000	27777	22497	15625	10000
Panel size	37.8"(W) x 37.8"(H)/960mm(W) x 960mm(H)/Customizable				56.69"(W) x 37.8"(H)/1440mm(W) x 960mm(H)/Customizable
Panel resolution (W x H)	192 x 192	160 x 160	144 x 144	120 x 120	144 x 96
Panel material	Aluminum/Iron				
Weight (kg)	45 - 55				
Brightness (nit)	6300	7000	6000	5500	6500
Max. power consumption (W/m ²)	900	900	950	870	1050
Avg. power consumption (W/m ²)	300	300	320	290	350
Horiz/Vert viewing angle (deg.)	140/120				
Refresh rate (Hz)	1920				
Gray level (bit)	14				
Brightness adjustment	Programmable/auto/manual				
Protection grade	IP65/54				
Serviceability	Front/Rear				
Other	Communication - level power supply(customization), hot double backup, temperature and humidity test, multi-signal input support, etc.				

Please note, specifications are for reference only. Please contact us for further details.

RoHS CE FC |   
 ISO 9001 ISO 14001

Free Product Consultation | Free Technical Support

Suite #206 16028 100A Ave. NW
Edmonton, AB

vuetronic.com

info@vuetronic.com